

cmreid@partners.org

Coleen M Reid MD
Chief of Palliative Care
North Shore Medical Center

a Community Hospital
in Salem, Massachusetts
Member of Partner's Health Care



By the numbers...

Date	# tested	Covid Pos inpts	PUI's	Critical Care #	Inpt Covid deaths
3/18	75	0	18		
3/25	347	11	69	8 Covid +	
3/30		32	68	11	
4/6		75	43	37	
4/13	150-200 test/day	110	45	32/ 5transferred	2 new/ total 12

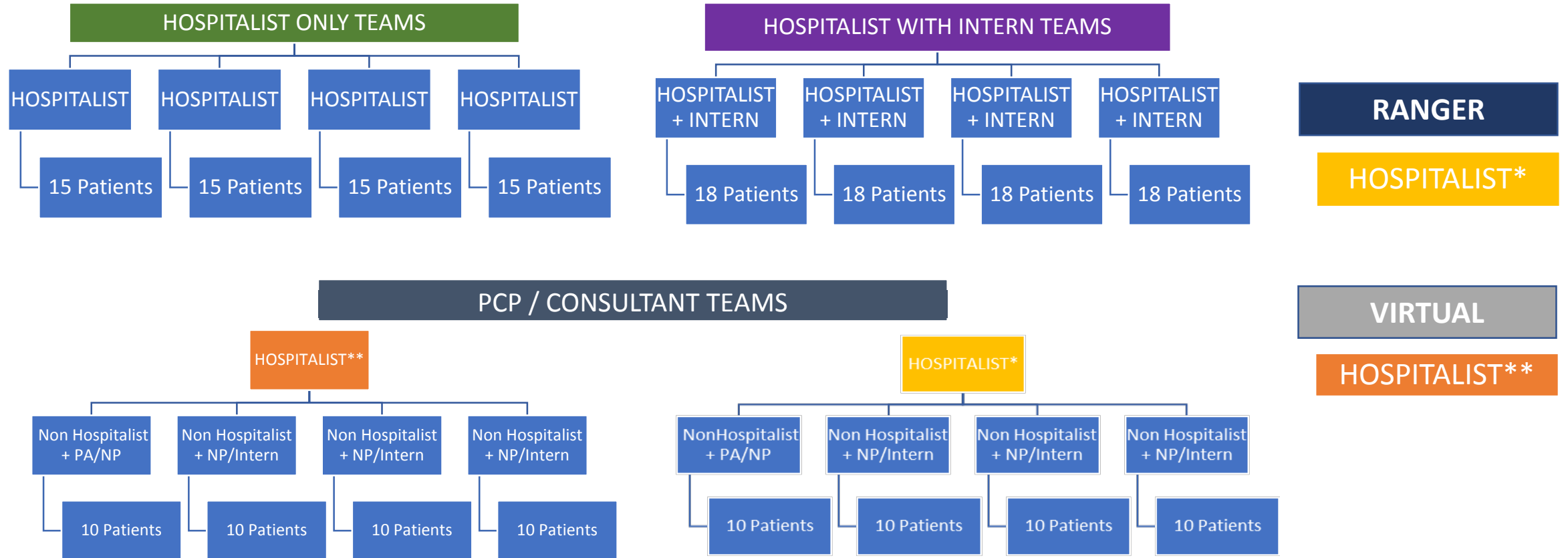


NORTH SHORE
MEDICAL CENTER

CONTINGENCY for HOSPITALIST SERVICE

Census 172 to >200

DAY ROUNDERS

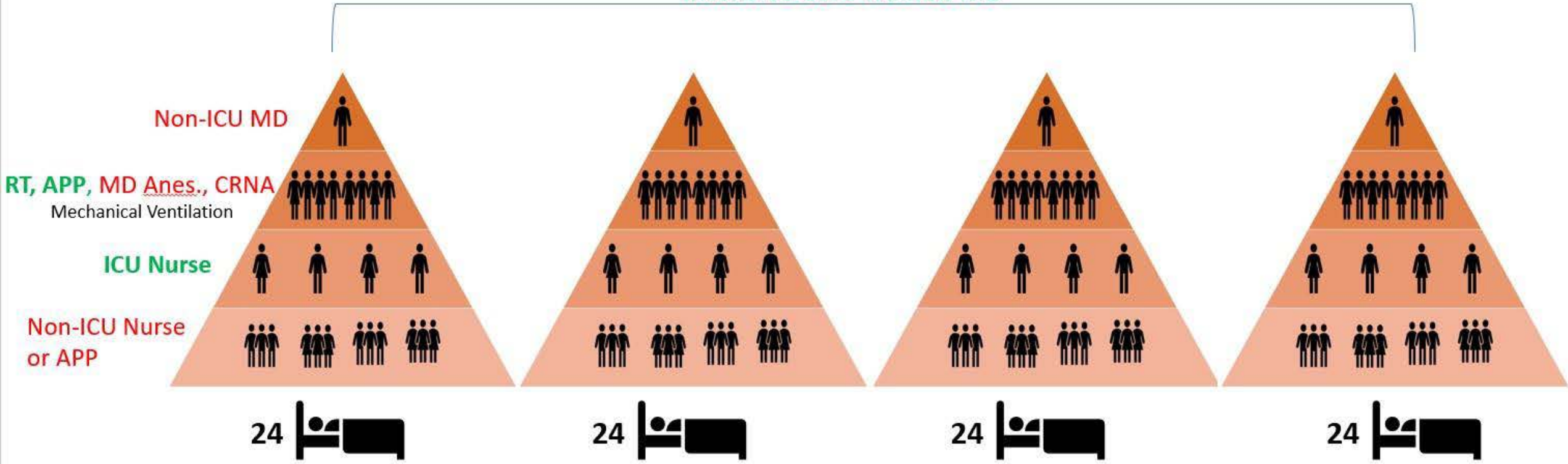


Tiered Staffing Strategy for Pandemic

Requiring Significant Mechanical Ventilation

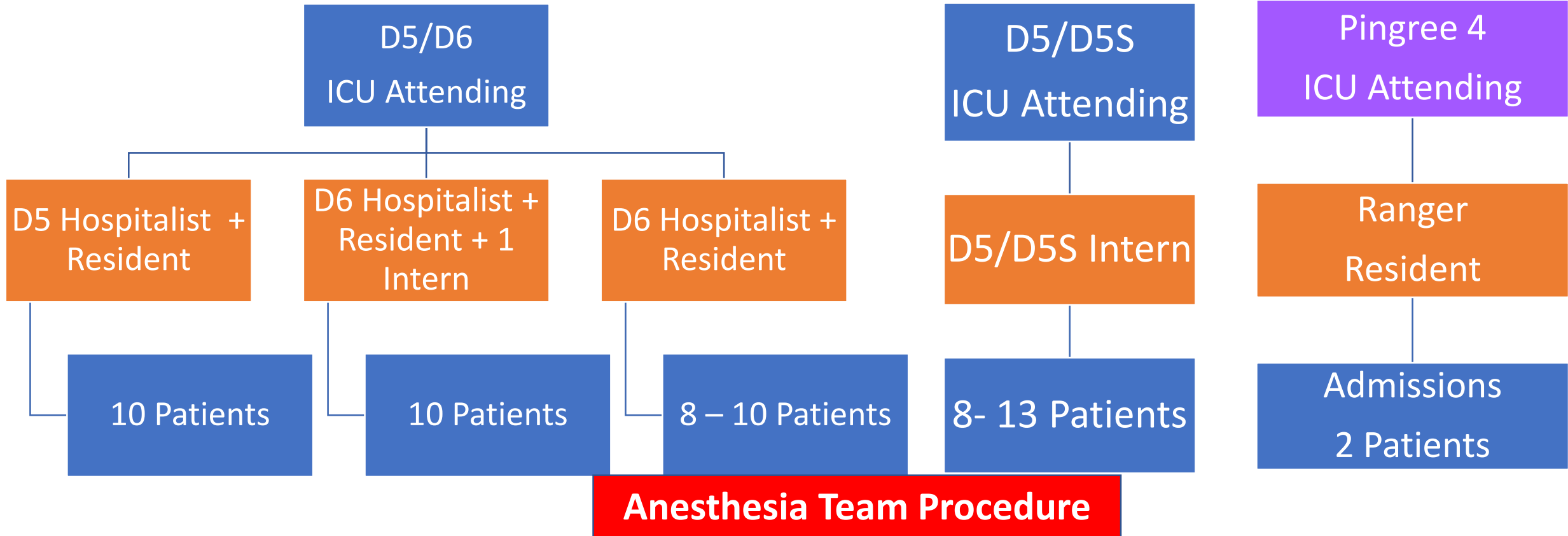


Intensive Care Trained MD



ICU level of care 30-45: DAY

ICU Rounding team



Floor Rounding team

D7= 1 Intern;

D8= 1 Intern;

D9= 1 Intern



VITALtalk

- <https://www.vitaltalk.org/guides/covid-19-communication-skills/>

Resources:

- <https://www.capc.org/toolkits/covid-19-response-resources/>
- <https://theconversationproject.org/wp-content/uploads/2020/04/tcpcovid19guide.pdf>
- <https://www.honoringchoices.org/covid-19>
- <https://www.ariadnelabs.org/areas-of-work/serious-illness-care/>
- www.pallicovid.app
- <https://www.mypcnow.org/fast-facts/>