

Health Begins

Where we Live, Learn, Work and Play

Understanding Equity

Rural Electrification



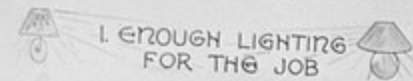
Rural electrification project

"It is particularly important that extensions of rural electrification be planned in such a way as to provide service on an area basis. The practice has been too frequent in the past for private utility companies to undertake to serve only the more prosperous and more populous rural sections.

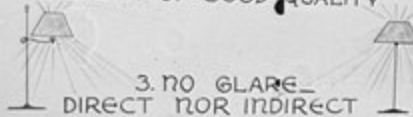
As a result, families in less favored and in sparsely settled sections were left unserved. I believe that our postwar rural electrification program should bring modern service of electric power to the farm families in the back country"

WHAT MAKES GOOD LIGHTING

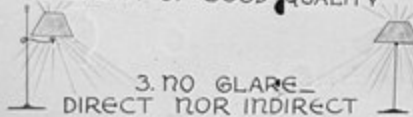
1. ENOUGH LIGHTING
FOR THE JOB



2. LIGHT OF GOOD QUALITY



3. NO GLARE—
DIRECT NOR INDIRECT





Planning **YOUR**
FARMSTEAD WIRING
AND LIGHTING



MORE POWER TO THE FARMER



Day after day, season after season, every farm has heavy and tedious jobs which must be done. Such work soaks up energy and time. More, it soaks up money. The farmer needs strong, fast help that costs little. Electric power is the answer. . . . Cheap to start with, the more it is used, the cheaper it gets. Modern farmers know how electricity can be turned into dollars. Electric farm equipment has been proved by experience. It is labor saving, pocketbook filling. Look at the equipment on this page. Think of it on your farm . . . its saving, its ready power, its money-making possibilities, now and in the future.



THE ELECTRIC BROODER.—For as little as $\frac{1}{2}$ of 1 kilowatt-hour per chick, a whole brood can be raised under a modern brooder.



THE ELECTRIC MILK COOLER.—Milk keeps sweet in a modern regulated dairy cooler; 1 kilowatt-hour will cool 10 gallons of milk a day.

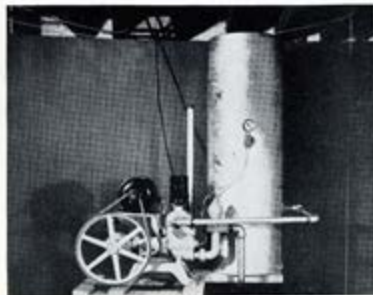
THE ELECTRIC MILKER.—It can milk 100 cows and never tire; it can milk 1 cow for an entire month for the cost of only $1\frac{1}{2}$ kilowatt-hours.



THE ELECTRIC SAW.—It saws up a cord of wood for as little as the cost of 2 kilowatt-hours, saves arm ache, time and money.



THE ELECTRIC PUMP.—It fetches water without grumbling, can serve all needs of the farm and home for about 25 kilowatt-hours per month.



THE ELECTRIC GRINDER.—It grinds many tools to a keen cutting edge at great speed, making the farmer's work surer, quicker, easier.



WORKING TOGETHER DID IT
ALL THE POWER YOU WANT
AT LOWEST COST!
A DREAM COME TRUE

AT LAST

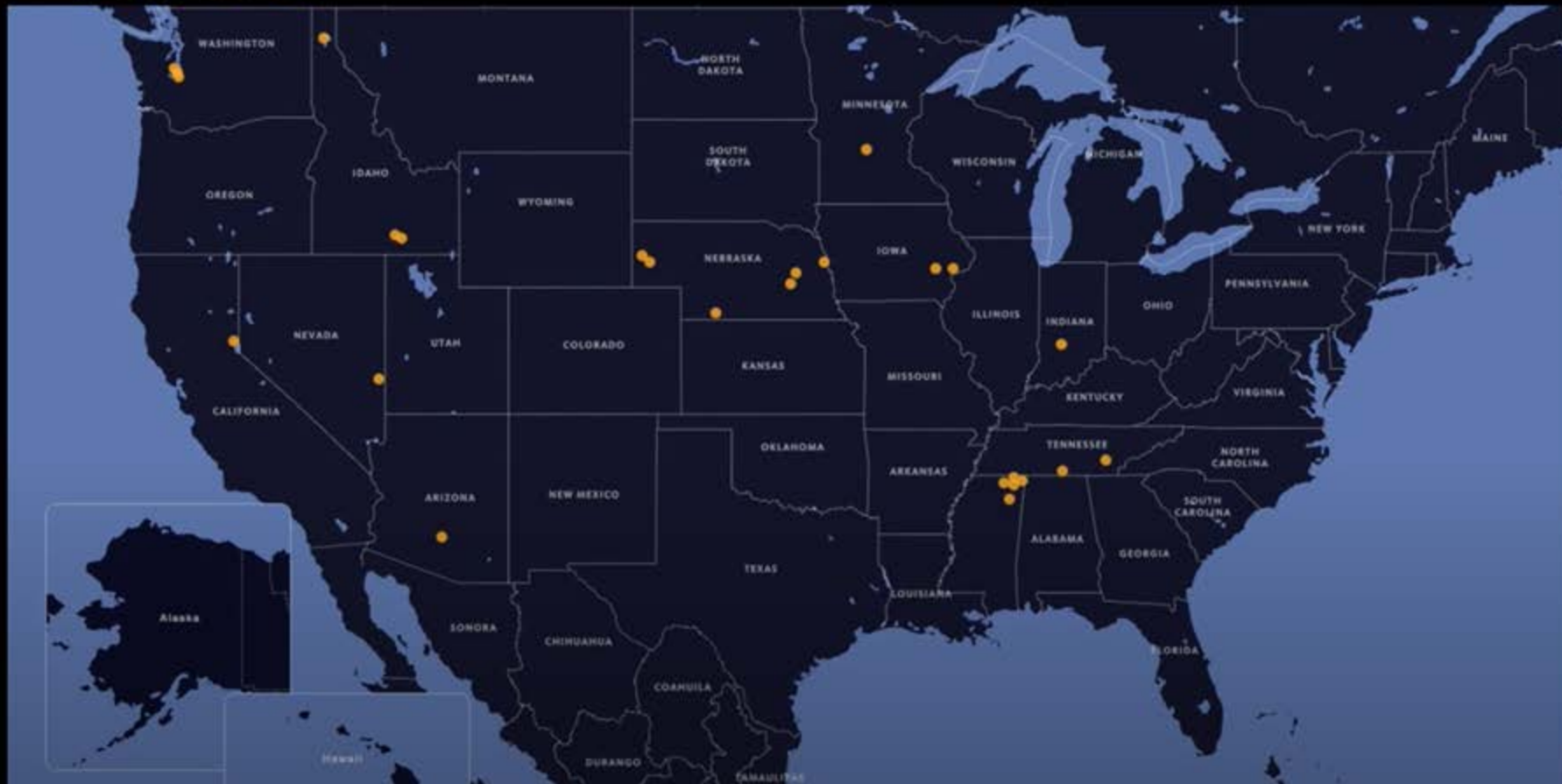
AT LAST



https://youtu.be/_VzT-StxGB8

1935

Eastern Iowa L & P Co-op



1958

Upper Missouri G&T Elec. Co-op



Equity



Equality

1/3 fewer rural houses recieving electrcity



Home study

Jim Crow of the North Season 1 Episode 20

<https://www.pbs.org/video/jim-crow-of-the-north-stijws/?fbclid=IwAR3TI3eh8jeyYY3PtVtsmJI3nqCiwOFU8UVMCV-YbXcMZMf0CDD7znB8DQg>

We need to talk about Injustice Bryan Stevenson

https://www.ted.com/talks/bryan_stevenson_we_need_to_talk_about_an_injustice?utm_campaign=tedsread&utm_medium=referral&utm_source=tedcomshare