



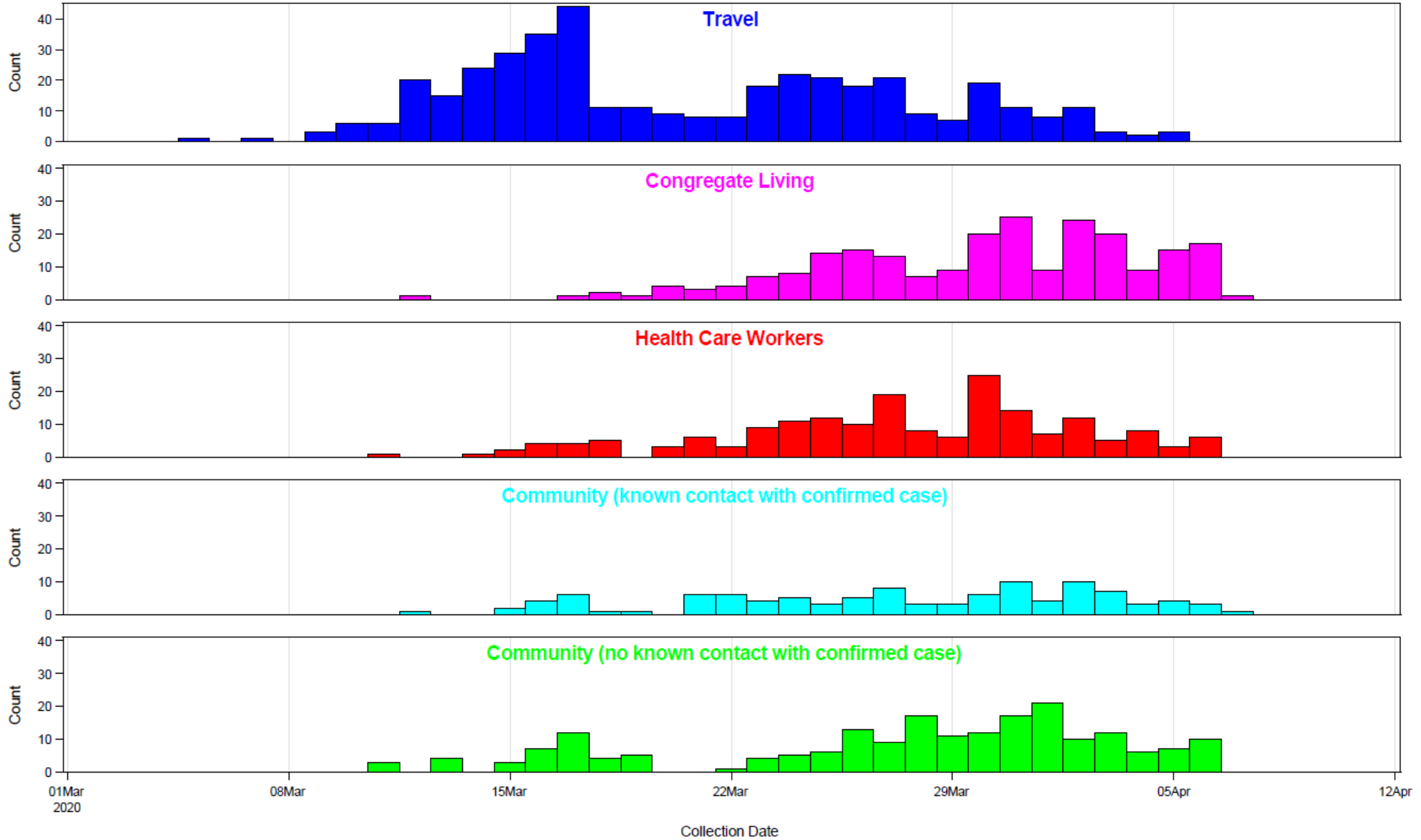
COVID-19 Case Investigations and Contact Tracing

Kathy Como-Sabetti, MPH
Epidemiology Supervisor

COVID-19 Minnesota Case Investigation Timeline

- January – Patient Under Investigations (PUI) testing criteria released by CDC
 - February PUIs tested – travel history to Wuhan/China
- March 6 – First COVID case confirmed in MN
 - Male, 70s, travel history on a cruise ship with known COVID cases
- Case increases
 - March 14 and 15 – 13 and 19 cases identified, respectively

COVID-19 Cases by Likely Setting of Exposure as of April 8

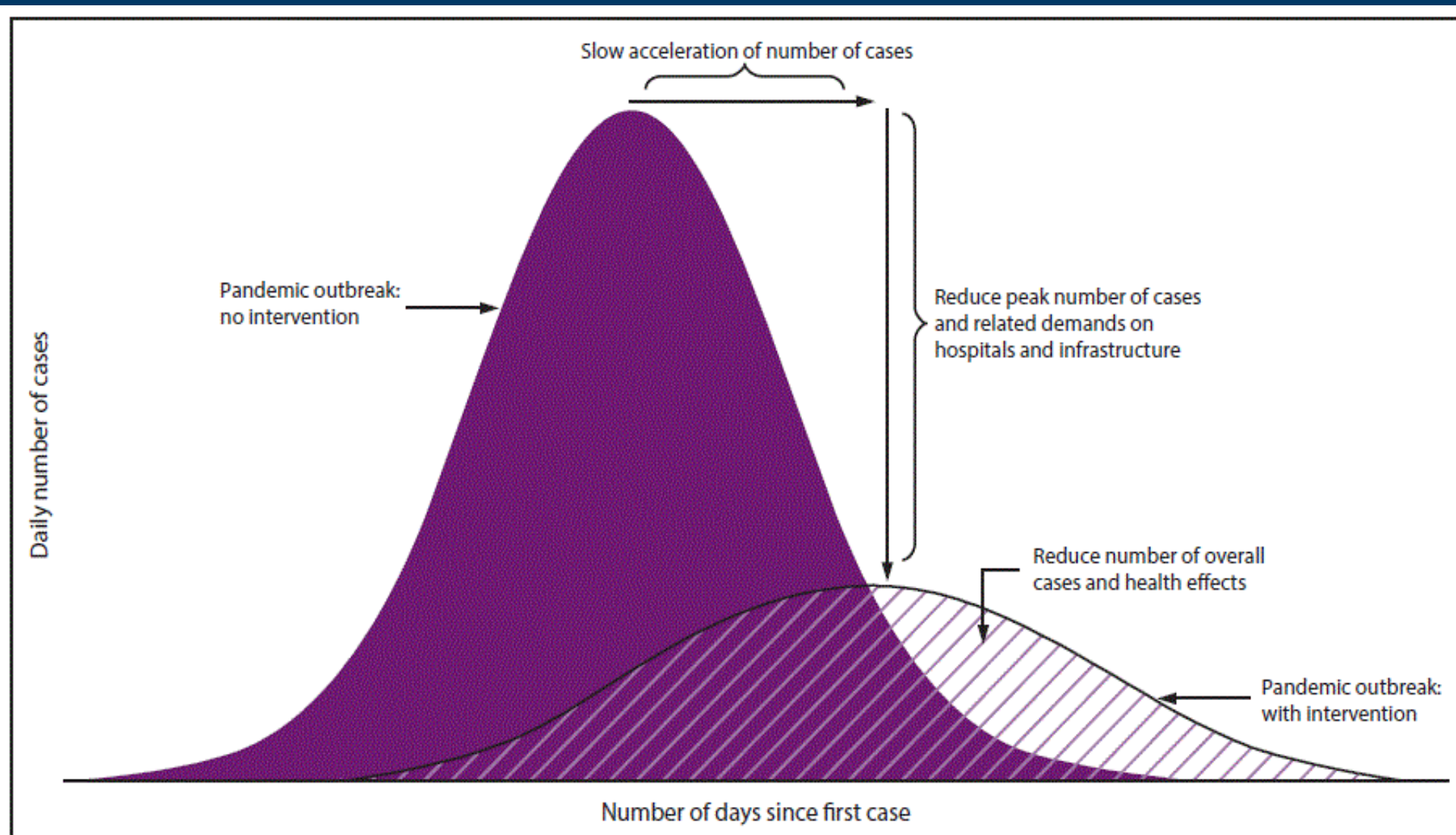


Type in your footnote...

Non-Pharmaceutical Interventions

- Actions to slow the spread of an infectious disease
- Does not include taking medicine or vaccination, hence non-pharmaceutical
- Includes isolation, quarantine, and social distancing

Non-Pharmaceutical Interventions Goals



From: CDC, *Community Mitigation Guidelines to Prevent Pandemic Influenza – United States, 2017*
(<https://www.cdc.gov/mmwr/volumes/66/rr/rr6601a1.htm>)

Isolation and Quarantine

- **Isolation:** Restriction of symptomatic persons during period of communicability.
- **Quarantine:** Restriction of healthy individuals, presumed exposed to disease, during period of communicability, to see if they become sick. May be more difficult to implement than isolation.

- Contact Tracing
 - Identify contacts of infected people to notify them of their exposure
 - Recommend contacts self-quarantine to limit the exposure to others
 - Support quarantine of contacts
- Historically and commonly used in response to infectious diseases
 - tuberculosis, STIs (e.g., HIV), Ebola, measles, severe acute respiratory syndrome

- Contact Tracing
 - Identify contacts of infected people to notify them of their exposure
 - Recommend contacts self-quarantine to limit the exposure to others
 - Support quarantine of contacts
- Historically and commonly used in response to infectious diseases
 - tuberculosis, STIs (e.g., HIV), Ebola, measles, severe acute respiratory syndrome

Case Interview / Contact Interview

- Case identification
- Case interview
 - Obtain basic demographic and epidemiologic information (e.g., potential exposures, high-risk settings)
 - Identify contacts
 - Within 6 feet of case when infectious for at least 15 minutes
 - Recommend self-quarantine to contacts for 14 days past last exposure

- Recommend self-quarantine to contacts for 14 days past last exposure - last day of exposure can be difficult or clear cut
- Pre-symptomatic and asymptomatic transmission
- Infectious period for asymptomatic cases
- Receiving basic, timely reporting information
- Case/contact volume

- Difficulty reaching cases and contacts
- Different recommendations for different settings
 - HCW
 - Essential service workplaces
- Required on-going flexibility

THANK YOU
Questions?